



## Flat 1, 6 Cliff Bridge Place, Scarborough, YO11 2EZ

Offers In The Region Of £89,950

- LOWER GROUND FLOOR FLAT
- MODERN KITCHEN
- LEASEHOLD WITH SHARE IN FREEHOLD
- GAS CENTRAL HEATING
- PRIVATE ENTRANCE
- 3 PIECE BATHROOM
- CLOSE TO SOUTHBAY BEACH
- GOOD SIZE LOUNGE
- TWO DOUBLE BEDROOMS
- TOWN CENTRE LOCATION

# Flat 1, 6 Cliff Bridge Place, Scarborough YO11 2EZ

Andrew Cowen Estate Agent welcome to the market this WELL PRESENTED, LOWER GROUND FLOOR APARTMENT situated close to the TOWN CENTRE, boasting PRIVATE ENTRANCE, TWO DOUBLE BEDROOMS and a MODERN KITCHEN AND BATHROOM, which would benefit a NUMBER OF BUYERS Including those looking for a 'SEASIDE BOLTHOLE' to enjoy all that SCARBOROUGH HAS TO OFFER.



Council Tax Band: A

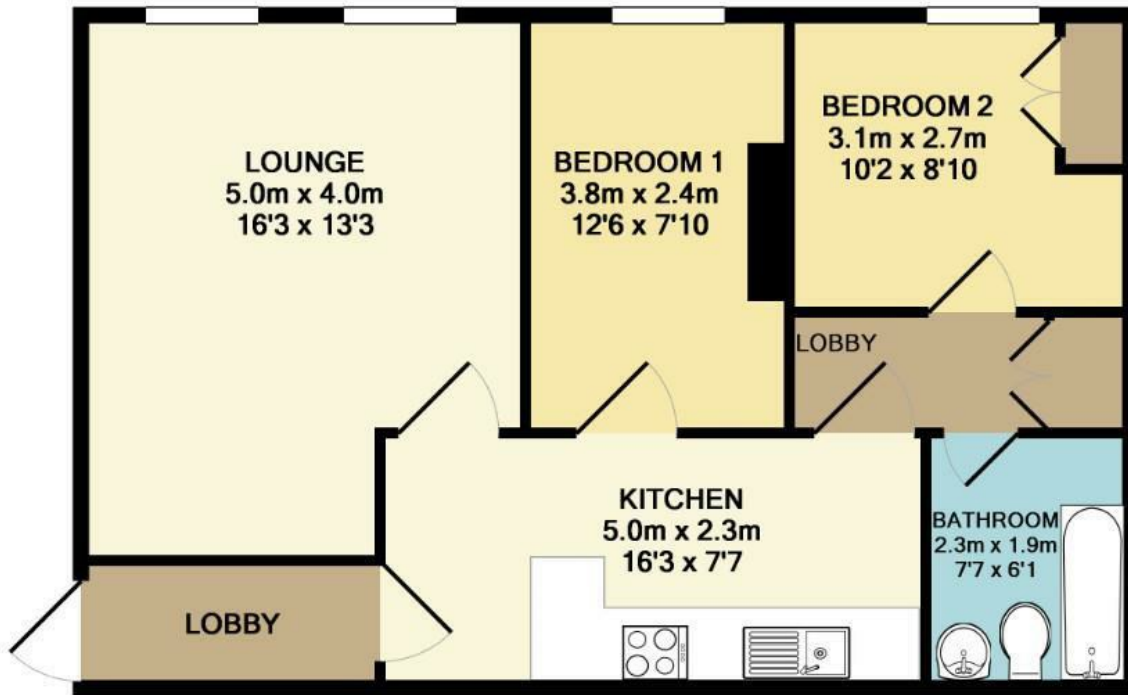


This property comprises in brief; Private entrance leading dining kitchen with modern fitted kitchen with a range of integrated appliances, inner hallway, good size bay window lounge with dining space, two, good sized double bedrooms and modern fitted three piece shower suite with walk in shower. Gas central heating throughout.

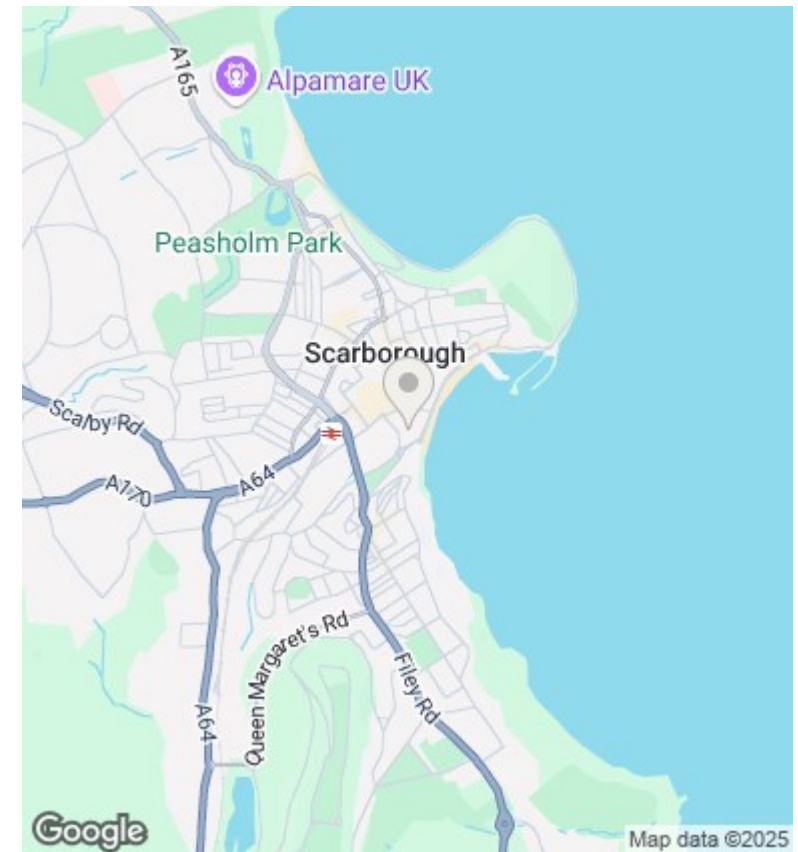
Positioned on Cliff Bridge Place, the apartment is just a short walk from Scarborough Town Centre, offering a range of high street and independent shops. Additionally, both South and North Bay Beaches are easily accessible.

We are informed the property is Leasehold with a share in the Freehold, Yes to short term lets, no holiday lets, yes to pets.





TOTAL APPROX. FLOOR AREA 57.8 SQ.M. (623 SQ.FT.)  
 Measurements are approximate. Not to scale. Illustrative purposes only  
 Made with Metropix ©2018



### Viewings

Viewings by arrangement only. Call 01723 377707 to make an appointment.

| Energy Efficiency Rating                           |         |                         |
|--|---------|-------------------------|
|  | Current | Potential               |
| <i>Very energy efficient - lower running costs</i> |         |                         |
| (92 plus) <b>A</b>                                 |         |                         |
| (81-91) <b>B</b>                                   |         |                         |
| (69-80) <b>C</b>                                   | 73      | 77                      |
| (55-68) <b>D</b>                                   |         |                         |
| (39-54) <b>E</b>                                   |         |                         |
| (21-38) <b>F</b>                                   |         |                         |
| (1-20) <b>G</b>                                    |         |                         |
| <i>Not energy efficient - higher running costs</i> |         |                         |
| <b>England &amp; Wales</b>                         |         | EU Directive 2002/91/EC |